

Southern Living®

SUMMERTIME FAVORITES

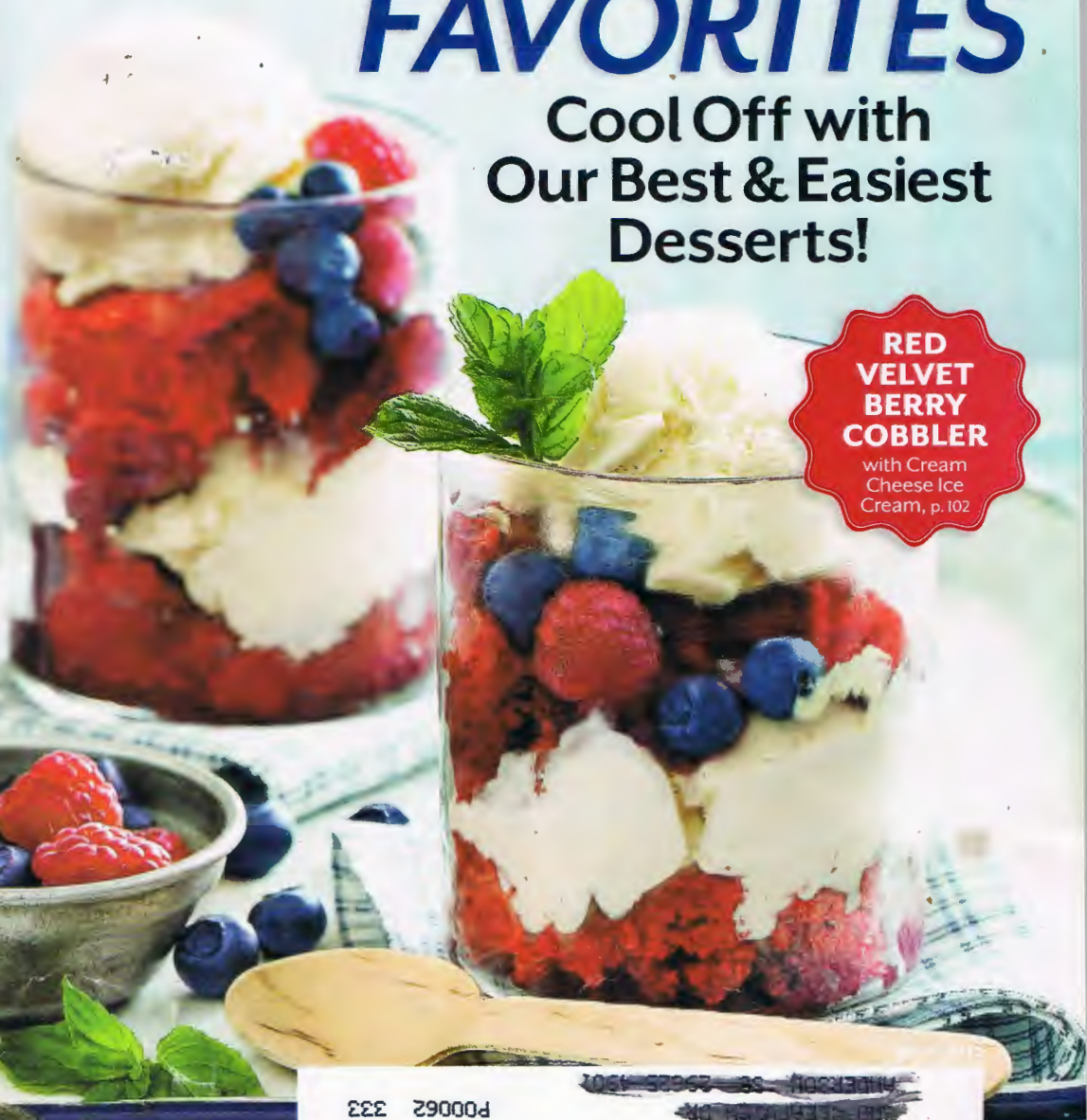
53 NEW RECIPES
HOT DOGS
HUSH PUPPIES
TOMATO PIE
& MORE

Cool Off with
Our Best & Easiest
Desserts!

Small
Budgets,
Huge
Makeovers

42 Ideas
for Porch,
Patio &
Garden

RED VELVET BERRY COBBLER
with Cream Cheese Ice Cream, p. 102



The South's Next
Great Neighborhoods

Flowers that
Beat the Heat

#BXBDHQ *****CAR-RT LOT**R-018
#2292 0516 320#SL 5535C00 U MAY13
0010
#07900
P00062 333



Main house at
The Red Horse Inn



Cooley Bros.
Peach Shed

Bottletree Blonde (\$3.50), a crisp brew from nearby Tryon, North Carolina.

Drive a few miles south, and bed down at **The Red Horse Inn** (864/895-4968; rooms from \$205), a collection of cottages and inn rooms perched on an expansive horse farm.

DAY TWO

Landrum to Salem

Distance: 96 miles

After pancakes and egg frittatas, visit the inn's resident horse, Secret, the great-grandchild of Triple Crown winner Secretariat. Head west on Scenic Highway 11, where **Table Rock**, a broad granite dome, dominates the skyline. Visit **Perdue's Fruit Farm** (carolinafarmers.com/perdue), a 20-plus-acre fruit farm with a roadside market that many claim has the best peach preserves in the state. The market doesn't open until 10 a.m. because owner

Dick Perdue and his crew pick the fruit each morning.

Grab lunch at **Sisters** (864/944-8100) in Salem, where each sister has a signature sandwich. Try the reuben (\$7), ham-and-turkey club (\$6), and chicken salad (\$6). Locals love to debate which is best. Check in at the pastoral **Sunrise Farm B&B** (888/944-0121; rooms from \$110), a restored Victorian farmhouse on a former cotton plantation in Salem. Nab the Corn Crib, with a kitchen and private patio overlooking a pasture of pygmy goats, sheep, and llamas.



Gaffney's
Peachoid

Follow Highway 11 south to tiny downtown Walhalla for dinner at **The Steak House Cafeteria** (864/638-3311; *dinner on weekends only*), a meat 'n' three that's been an Upstate institution since the 1970s. Order the local favorite: crispy fried chicken (\$3).



DAY THREE

Salem to Long Creek

Distance: 36 miles

Be sure to enjoy from-scratch peach muffins and peach coffee cake before bidding farewell to the pygmy goats at Sunrise.

For one last, great peachy gasp, head west on U.S. 76 to Long Creek, where you can pluck the fuzzy fruit straight from the trees at **Chattooga Belle Farm** (864/647-9768). The 138-acre farm has a 270-degree view of the mountains, making it a popular destination for weddings. (It's impossible to take a bad picture in their peach orchard.) Linger on the grounds and meet owner Ed Land, who is known to launch bruised peaches from a slingshot for the kids. His market is packed with such goods as peach jam and Chattooga Belle's newest endeavor, muscadine wine. **SL**